



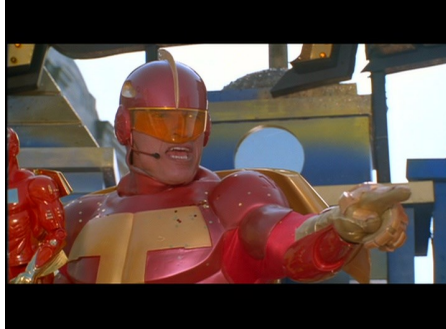
# Big Christmas Quiz



Round 1—Christmas Movies. Can you identify the following movies?



It's A Wonderful  
Life



Jingle All The Way



Miracle on 34th Street



Elf



The Nightmare before  
Christmas

Round 2 — The following phrases all say 'Merry Christmas' - but which language?

1. god Jul \_\_\_\_\_ Swedish \_\_\_\_\_

2. joyeux Noël \_\_\_\_\_ French \_\_\_\_\_

3. Feliz Navidad \_\_\_\_\_ Spanish \_\_\_\_\_

4. linksmų Kalėdų \_\_\_\_\_ Lithuanian \_\_\_\_\_

5. Nadolig Llawen \_\_\_\_\_ Welsh \_\_\_\_\_

Round 3—Can you identify the following ‘Christmas/Winter’ objects?



Christmas Cracker



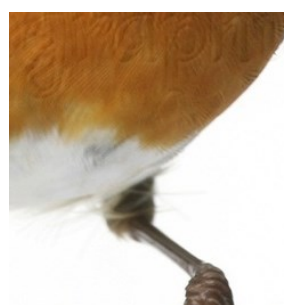
Mistletoe



Baubles



Pine Cone



Robin

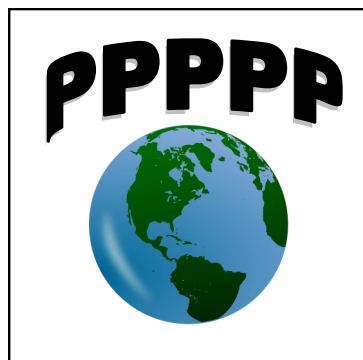
Round 4—Fill in the blanks of the following popular Christmas songs.

1. RUDOLPH / THE / RED-NOSED / REINDEER
2. WE / WISH / YOU / A / MERRY / CHRISTMAS
3. FROSTY / THE / SNOWMAN
4. WHITE / CHRISTMAS
5. DO / THEY / KNOW / IT'S / CHRISTMAS

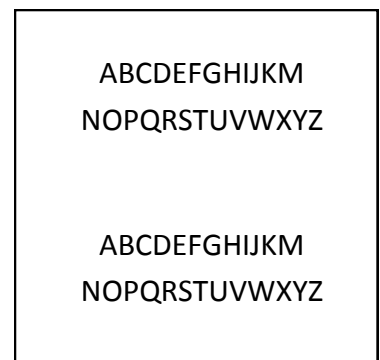
Round 5—Christmas Dingbats—identify the Christmas/Winter word or phrase?



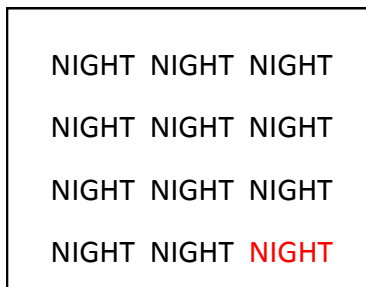
Kisses under the mistletoe



Peace on Earth



Noel, Noel



12th Night



Wrapping Paper

Round 6— The following are all traditional Christmas Hymns but the titles have been changed. Can you identify the original? Eg

Not home in an animals food trough = Away in a Manger

1. Absolutely quiet after 6pm \_\_\_\_\_ Silent Night\_\_\_\_\_
2. Listen, the heavenly body is making music with their voices  
\_\_\_\_\_ Hark, the Herald Angels Sing\_\_\_\_\_
3. O very small dwelling place near Jerusalem  
O, Little town of Bethlehem
4. At the same time as people looking after their sheep at the end of the day \_\_ Whilst, Shepherds watched their flocks by night
5. Me and my two royal friends of a far away place  
\_\_\_\_\_ We Three Kings of Orient are\_\_\_\_\_

Round 7—Christmas Books. Can you identify the following books set around Christmas-time?



A Christmas Carol



The Polar Express



The lion, The Witch and  
The Wardrobe



How The Grinch Stole  
Christmas



The Snowman

Round 8—And finally..... Christmas trivia!

1. What event traditionally takes place in the UK at 3pm on Christmas Day?  
\_\_\_\_\_The Queen's Speech\_\_\_\_\_
2. Maths question—what would be the answer to the puzzle:  
Days of Christmas x Gold Rings = 60
3. Which external Australian territory is amongst the first to celebrate Christmas day each year due to the world time zones (there is a clue in the question!) \_\_Christmas Island\_\_\_\_\_
4. Which Country donates the Christmas tree for Trafalgar Square in London each year? \_\_\_Norway\_\_\_\_\_
5. How many drummers were drumming in the famous '12 days of Christmas song'? 12

Name \_\_\_\_\_

Tutor Group \_\_\_\_\_